

**Great power and stability**

The CX14 powered truck is available in several versions fitted with MOSFET technology. They are suitable for carrying loads on smooth floors and other surfaces. The small size and turning radius make the CX14 range ideal for work in areas where space is at a premium, such as lorries or narrow aisles.

**Batteries and battery charger built in**



**12 months warranty**

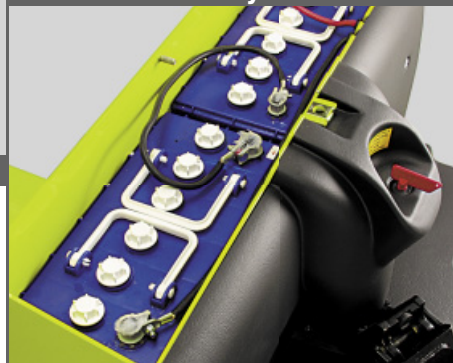


**Handle with control**

- Large dimensioned Butterfly button control direction and speed.
- Double lifting command placed on both sides of the handle.
- Battery discharge indicator.
- Safety push button + horn located on top of the tiller head.

The Plus version has a very powerful battery (110Ah) that gives better endurance.

**Traction battery**



**Stabilising wheels**

Two adjustable wheels allow ease of movement, even on the most difficult of surfaces. The wheels also provide great stability under all conditions.

