

TRACCESS 170 E



**Performance and optimal durability
for a battery tracked platform.**



**5 hours with full autonomy, while working
with clean energy without polluting.**



Working places, industry, shopping centers, sports centers,

I dati contenuti nella presente scheda non sono impegnativi. Ci riserviamo il diritto di apportare modifiche in qualsiasi momento senza preavviso. Le informazioni riportate hanno solo scopo illustrativo. _TRACCESS_ _TDE_ _A3_ _EN



TRACCESS 170 E with electric engine



**Working with
clean energy
without polluting**

**SAIE
2010**

International Building Exhibition
Bologna, 27-30 ottobre

CTE S.p.A.

Headquarter and Factory - Rovereto (Tn): via Caproni, 7
ph. +39 0464.48.50.50 - fax +39 0464.48.50.99

Factory - Bertinoro (Fc): viale 2 Agosto, 670
ph. +39 0543.44.88.30 - fax +39 0543.44.83.43

e-mail: info@ctelift.com

CTE UK Ltd - Enderby Leicestershire - UK
CTE FRANCE Sas - Achères - Saint Clair du Rhone - France



www.ctelift.com

ENGLISH





SPECIFICATION TRACCESS 170 E

TECHNICAL DATA

- Articulated boom (two elements) + telescopic boom (main boom + extension) + jib
- 330° turret rotation on bearing turntable
- Individual, proportional electrohydraulic controls in basket
- Engine start and stop controls from basket
- Basket base in composite material with aluminium guardrails (1300 x 700 x 1100 mm)
- Automatic hydraulically actioned basket levelling
- Basket load sensing device
- N° 4 hydraulic outriggers with ground pressure sensors
- 230 V AC EC electrical socket in the basket
- Gradeability approximately 31%
- Drive speed max 0,8 Km /h
- Electro-hydraulic steering from the ground with an umbilical remote control system
- Electric engine 48V
- Lithium 100 Ah batteries power (charging cycles permitted 2000)
- Working autonomy (estimated) 4-5 hours
- 230 V 1,5 Kw auxiliary engine
- Hour meter
- Standard boom colours blue (RAL 5017) or white (RAL 9010)
- CE certified
- Remote spiral cable for traverse from ground

PERFORMANCE

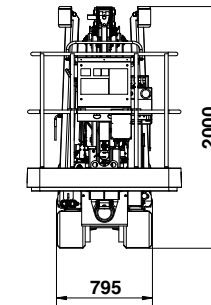
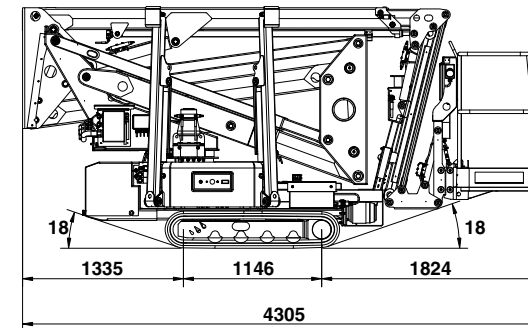
Working height	17 m
Platform height	15 m
Working outreach	7,5 m
Capacity	200 kg
Basket dim.	1300x700x1100 mm
Closed dimensions (transit)	800x2000x4250 mm
Unit weight	2050 kg



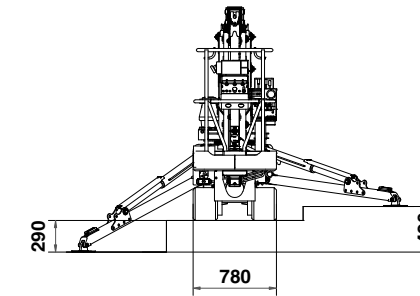
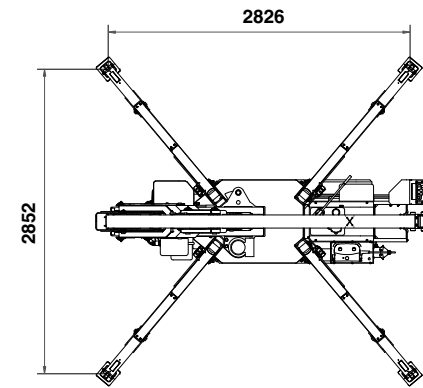
TECHNICAL DETAILS

- 2 x Safety Harness hooking locations on the platform
- Emergency push button
- Emergency manual pump
- Outriggers/boom interlocking facility
- Manual emergency lowering valves
- Cylinders with safety non-return valves
- Intermittent buzzer for traverse and turnable rotation
- Active track braking system automatically applied in stationary mode
- Instructions & Maintenance Manual

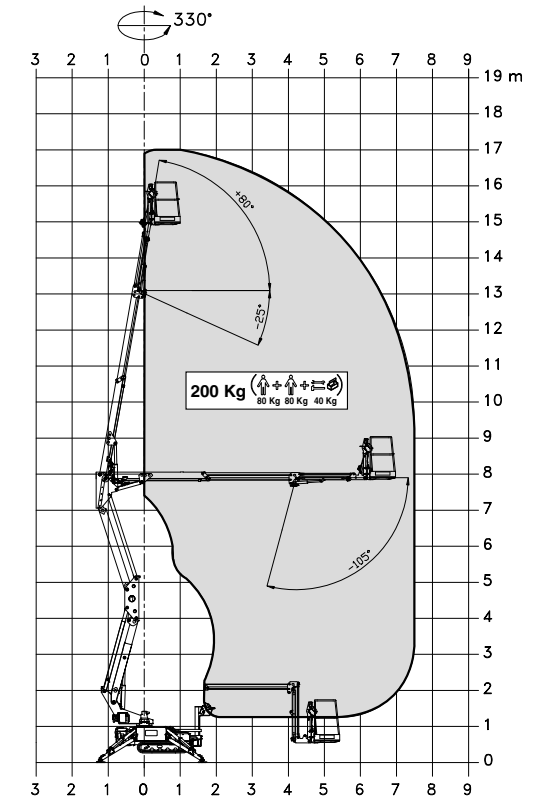
PLATFORM DIMENSIONS



STABILIZATION



WORKING AREA



KEY POINTS

