

# SPECIFICATION **TRACCESS 170**

## **TECHNICAL DATA**

- Articulated boom (two elements) + telescopic boom (main boom + extension) + jib
- 330° turret rotation on bearing turntable
- Individual, proportional electrohydraulic controls in basket
- Engine start and stop controls from basket
- Basket base in composite material with aluminium guardrails (1300 x 700 x 1100 mm)
- Automatic hydraulically actioned basket levelling
- Basket load sensing device
- N° 4 hydraulic outriggers with ground pressure sensors
- 230 V AC EC electrical socket in the basket
- Gradeability approximately 31%
- Drive speed max 1,5 Km /h
- Single cylinder 15 HP petrol engine
- Electro-hydraulic steering from the ground with an umbilical remote control system
- 230 V 1,5 Kw auxiliary engine
- Hour meter
- Standard boom colours blue (RAL 5017) or white (RAL 9010)
- CE certified
- Remote spiral cable for traverse from ground

## **PERFORMANCE**

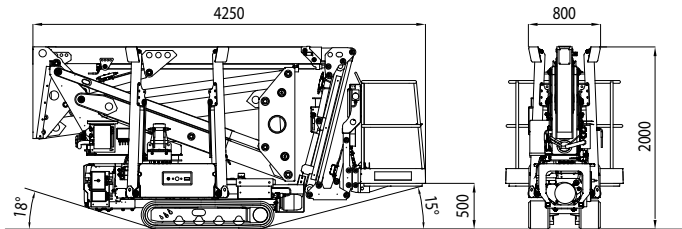
Working height	17 m
Platform height	15 m
Working outreach	7,5 m
Capacity	200 kg
Basket dim.	1300x700x1100 mm
Closed dimensions (transit)	800x2000x4250 mm
Unit weight	2050 kg



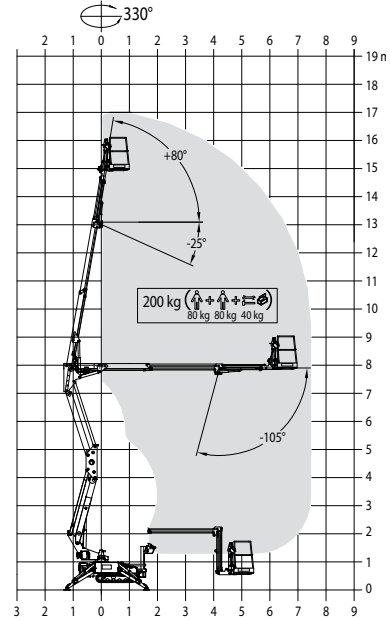
## TECHNICAL DETAILS

- 2 x Safety Harness hooking locations on the platform
- Emergency push button
- Emergency manual pump
- Outriggers/boom interlocking facility
- Manual emergency lowering valves
- Cylinders with safety non-return valves
- Intermittent buzzer for traverse and turnable rotation
- Active track braking system automatically applied in stationary mode
- Instructions & Maintenance Manual

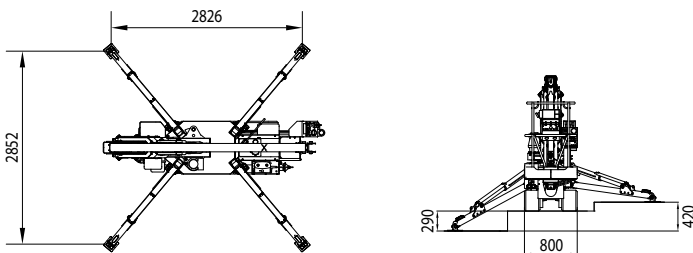
## PLATFORM DIMENSIONS



## WORKING AREA



## STABILIZATION



## KEY POINTS

Compact closed dimensions: 80 cm (width) x 200 cm (height)

Individual proportional hydraulic controls

Basket load sensing device

Clean top boom, internal mounted services

200 kg basket capacity throughout entire working area

Single cylinder 15 HP petrol engine

230V 1,5 Kw auxiliary engine



CTE S.p.A. | [www.ctelift.com](http://www.ctelift.com)

Sales Office Dolo (Ve) - [dolo@ctelift.com](mailto:dolo@ctelift.com)  
 ph. +39 041 51.00.130 - fax +39 041 41.38.44  
 Headquarter Rovereto (Tn) - [info@ctelift.com](mailto:info@ctelift.com)  
 ph. +39 0464 48.50.50 - fax +39 0464 48.50.99  
 Milano Branch S. Giuliano Milanese (Mi) - [milano@ctelift.com](mailto:milano@ctelift.com)  
 ph. +39 02 98.81.100 - fax +39 02 98.28.20.96  
 Bertinoro Branch & Factory (FC) - [bertinoro@ctelift.com](mailto:bertinoro@ctelift.com)  
 ph. +39 0543 44.88.30 - fax +39 0543 44.83.43

TRACCESS