

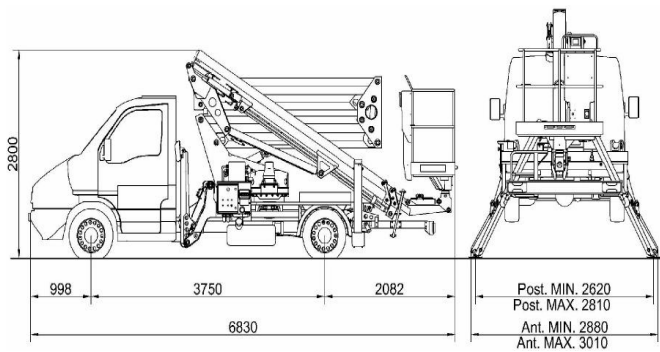
SPECIFICATION

ZED 20L on Iveco Daily

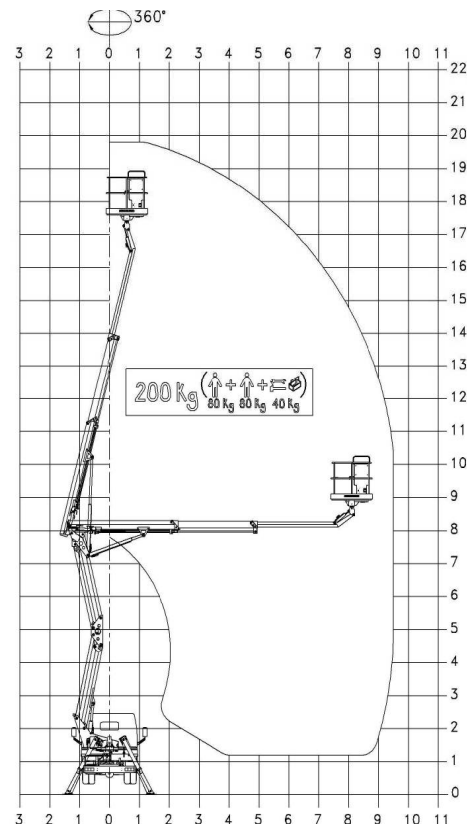
TECHNICAL DATA

- Double pantograph + telescopic boom (main boom + two extensions)
- Sigma boom movement enabled by connecting rods
- 360° continuous turret rotation on bearing turntable
- Proportional electro-hydraulic commands controls in basket and ground
- Engine start and stop from basket and from ground
- Antislip aluminium flatbed decking with tool tray walls
- Basket base in composite material with aluminium guardrails
- Basket load sensing device
- 65° Right + 65° Left hydraulic basket rotation
- Automatic hydraulically actioned basket levelling
- N°4 hydraulic outrigger with ground pressure cont act
- Hydraulic system operated by vehicle's PTO
- Buzzer indicating when PTO engaged
- Hour meter
- 1 flashing beacon
- 230V AC EC electrical socket in the basket
- Standard blue (RAL 5017) or white (RAL 9010) paint work
- CE certified

DIMENSIONS



WORKING ENVELOPE



PERFORMANCE

Working height	19,8m
Platform height	17,8m
Working outreach	9,5m
Capacity	200kg
Basket dim.	1400x700x1100mm
GVW minimum	3,5t

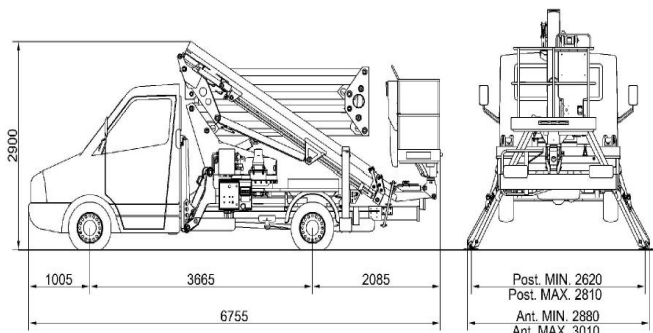
SPECIFICATION

ZED 20L on Mercedes Sprinter

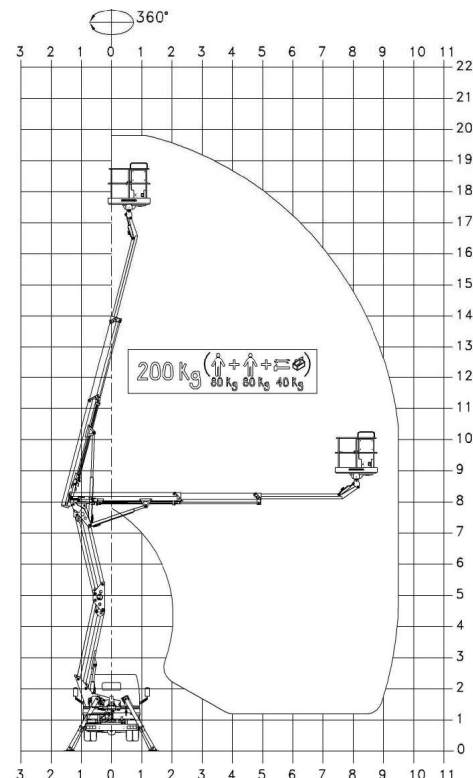
TECHNICAL DATA

- Double pantograph + telescopic boom (main boom + two extensions)
- Sigma boom movement enabled by connecting rods
- 360° continuous turret rotation on bearing turntable
- Proportional electro-hydraulic commands controls in basket and ground
- Engine start and stop from basket and from ground
- Antislip aluminium flatbed decking with tool tray walls
- Basket base in composite material with aluminium guardrails
- Basket load sensing device
- 65° Right + 65° Left hydraulic basket rotation
- Automatic hydraulically actioned basket levelling
- N°4 hydraulic outrigger with ground pressure cont act
- Hydraulic system operated by vehicle's PTO
- Buzzer indicating when PTO engaged
- Hour meter
- 1 flashing beacon
- 230V AC EC electrical socket in the basket
- Standard blue (RAL 5017) or white (RAL 9010) paint work
- CE certified

DIMENSIONS



WORKING ENVELOPE



PERFORMANCE

Working height	19,8m
Platform height	17,8m
Working outreach	9,5m
Capacity	200kg
Basket dim.	1400x700x1100mm
GVW minimum	3,5t

CTES.p.A. | www.ctelift.com

Sales Office Dolo (Ve) - dolo@ctelift.com
 ph. +39 041 51.00.130 - fax +39 041 41.36.44
 Headquarter Rovereto (Tn) - info@ctelift.com
 ph. +39 0464 48.50.50 - fax +39 0464 48.50.99
 Milano Branch S. Giuliano Milanese (MI) - milano@ctelift.com
 ph. +39 02 98.81.100 - fax +39 02 98.28.20.96
 Bertinoro Branch & Factory (FC) - bertinoro@ctelift.com
 ph. +39 0543 44.88.30 - fax +39 0543 44.83.43

