

# SPECIFICATION

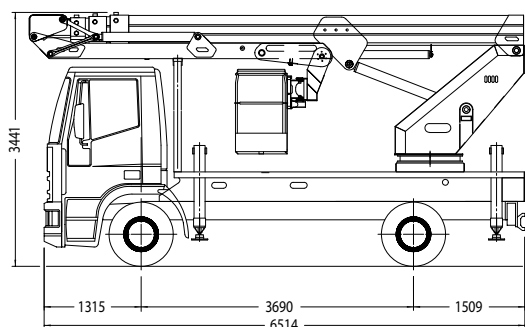
## B-LIFT 260 HR

- Telescopic boom (4 elements) (main boom + 3 telescopic extensions) • Not extendable jib with opening angle 180° • 360° continuous turret rotation on bearing turntable including electric/hydraulic swivel • Proportional electrohydraulic controls with simultaneous manoeuvres (ergonomic joysticks) • Engine start/stop control from basket • Anti slip aluminium flatbed decking • Aluminium basket • 65° Right + 65° Left hydraulic rotating basket • Automatic basket levelling by hydraulic parallelogram • Basket load sensing device • N° 4 hydraulic outriggers with ground pressure sensors • 220 V AC CE Electric socket in the basket • Buzzer indicating PTO engaged • Hour meter • N° 1 flashing beacon

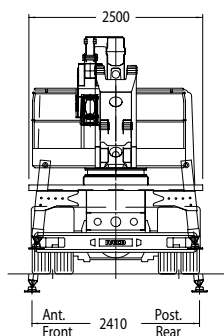
### PERFORMANCE

Working height	26 m	Capacity	120/200 kg
Platform height	24 m	Basket dim.	2400/3600x800x1100 mm
Working outreach	15/13,5 m	GVW minimum	12 t

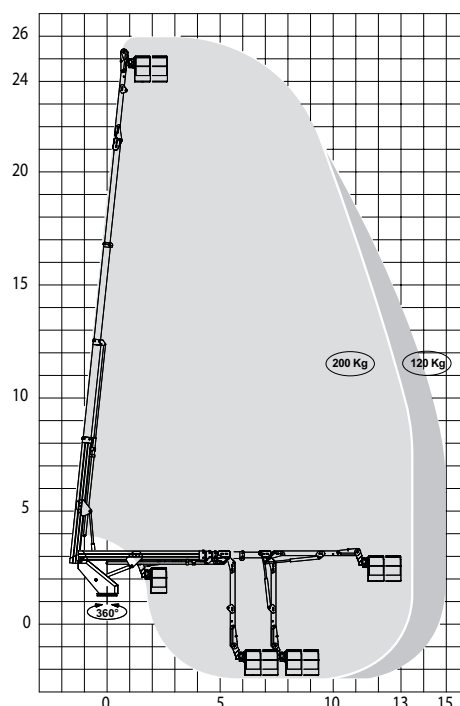
### DIMENSIONS



### OUTRIGGER FOOTPRINT



### WORKING ENVELOPE



Product specifications are subject to change without notice or obligation. Technical features and drawings in this brochure are for illustrative purposes only. B260HR - ed. 10/09

ADVERTENDO.COM™ We know how.



Branches: Rovereto, Dolo and S. Giuliano Milanese

CTE S.p.A. | [www.ctelift.com](http://www.ctelift.com)

**Sales Office** Dolo (Ve) - [dolo@ctelift.com](mailto:dolo@ctelift.com)  
**ph. +39 041 51.00.130 - fax +39 041 41.38.44**  
**Headquarter** Rovereto (Tn) - [info@ctelift.com](mailto:info@ctelift.com)  
**ph. +39 0464 48.50.50 - fax +39 0464 48.50.99**  
**Milano Branch** S. Giuliano Milanese (Mi) - [milano@ctelift.com](mailto:milano@ctelift.com)  
**ph. +39 02 98.81.100 - fax +39 02 98.28.20.96**  
**Bertinoro Branch & Factory** (FC) - [bertinoro@ctelift.com](mailto:bertinoro@ctelift.com)  
**ph. +39 0543 44.88.30 - fax +39 0543 44.83.43**

