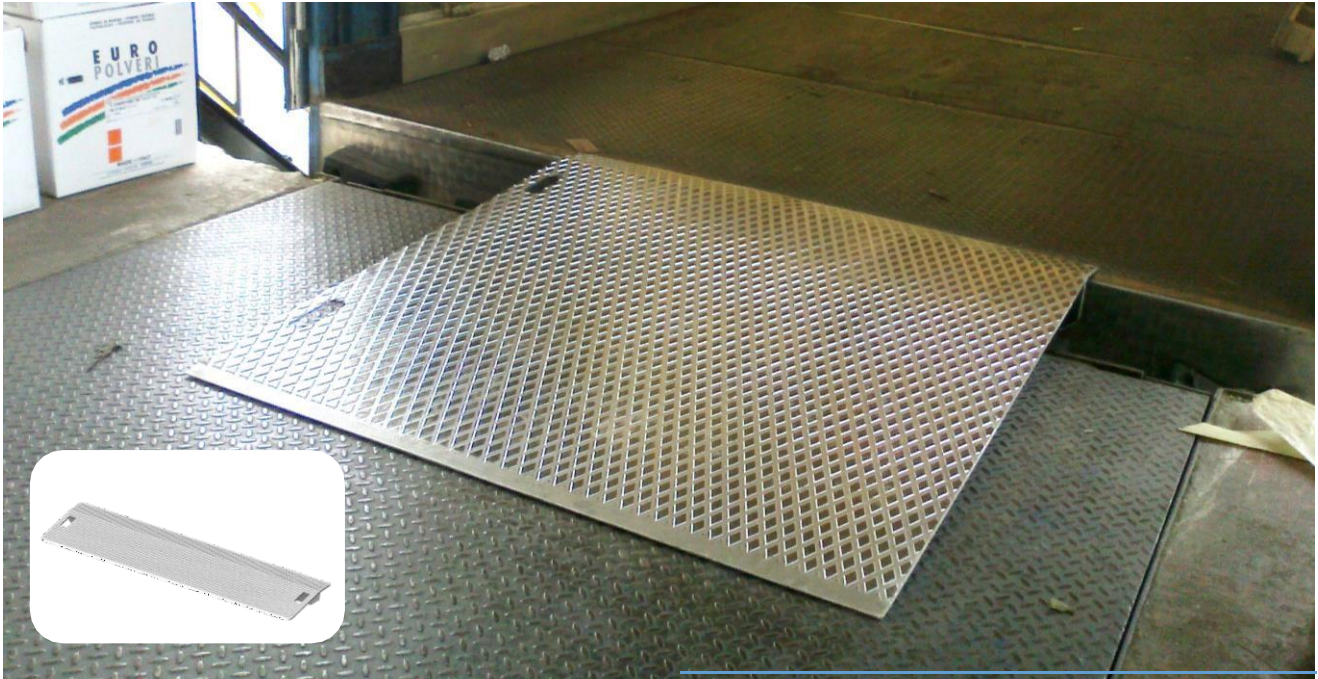


LIGHTWEIGHT MOBILE BRIDGE

Model PLQ

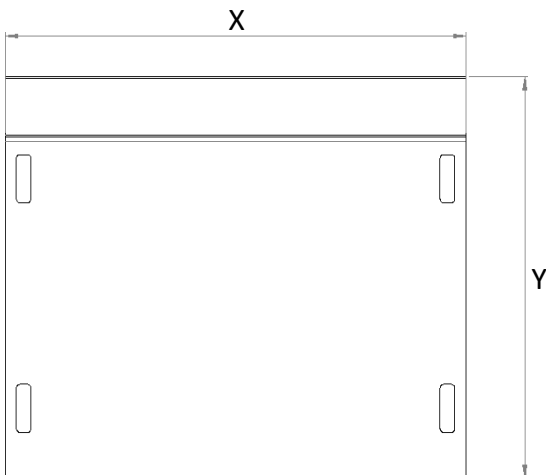
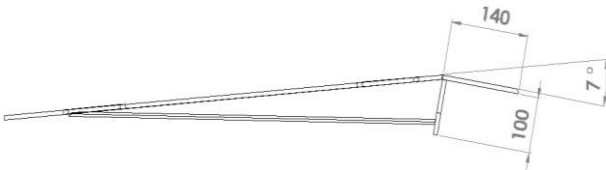


PLQ aluminum mobile bridge is the best solution for OCCASIONAL and LIGHT LOADS (hand boxes or veri light loading means), being simply an aluminum sheet with antislip surface treatment.

The bridge is equipped with MANUAL LIFTING HANDLE and BOTTOM ANTI-FALLING VERTICAL BLOCK. 1000-1250-1500mm long models have STRUCTURAL REINFORCEMENTS ON THE BOTTOM.

TECHNICAL DETAILS

NOMINAL LENGTH*	500/1000/1250mm
NOMINAL WIDTH*	1250/1500/2000mm
CAPACITY	10 kN (1T)
PLATE+LIP	Aluminium checker plate thickness 6+2mm
MAX. CONCENTRATED LOAD ON PLATFORM	1,3 N/mm ²
ACTIVATION	PLQ50 - n.1 hole/handle PLQ100-125-150 - n.2 handles
SAFETY	H100mm bottom anti-falling vertical block



CODE	X mm	Y mm	H+/-	WEIGHT (Kg)
PLQ50.125	1250	500	60/30	13
PLQ50.150	1500	500	60/30	16
PLQ50.200	2000	500	60/30	21
PLQ100.125	1250	1000	120/30	26
PLQ100.150	1500	1000	120/30	31
PLQ100.200	2000	1000	120/30	42
PLQ125.125	1250	1250	155/30	33
PLQ150.125	1250	1500	180/30	39