

# MOBILE BRIDGE WITH HINGED LIP

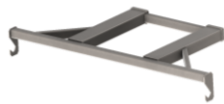
## Model PLUS



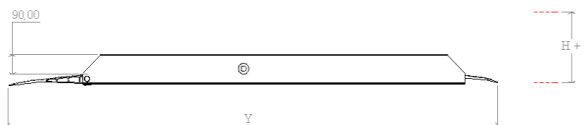
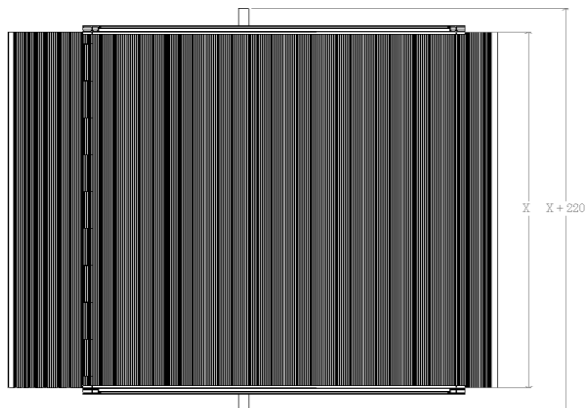
Thanks to its **BIGGER DIMENSIONS** and **FLAT HINGED BACKLIP**, PLUS aluminum mobile bridge is perfect for **DIFFERENCES OF HEIGHT BIGGER THAN 10CM AND/OR WITH LOW WHEELED VEHICLES (MANUAL/ELECTRIC TRANSPALLETS,...)**, moreover PLUS bridges are equipped with **SIDE ANTIFALLING PROTECTION EDGES**. They are easy and smart to handle, through **HAND TROLLEY OR FORKLIFT FRAME (NOT INCLUDED)**



CAR.MA manual trolley

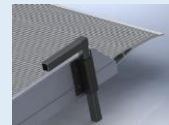


CAR.MU forklift frame



### TECHNICAL DETAILS

NOMINAL LENGTH*	1560/1960/2360 mm
NOMINAL WIDTH*	1650/2000 mm
CAPACITY	60 kN (6T)
PLATE+LIP	H40mm aluminium extruded profiles H90mm extruded side edges
MAX. CONCENTRATED LOAD ON PLATFORM	1,3 N/mm <sup>2</sup>
ACTIVATION	Manual trolley or forklift frame (not included)
OPTIONAL (NOT INCLUDED)	Side vertical anti-slip blocks



CODE	X mm	Y mm	H+	WEIGHT (Kg)
PLUS150A	1650	1560	200	100
PLUS190A	1650	1960	250	120
PLUS230A	1650	2360	300	140
PLUS150B	2000	1560	200	200
PLUS190B	2000	1960	250	250
PLUS230B	2000	2360	300	300