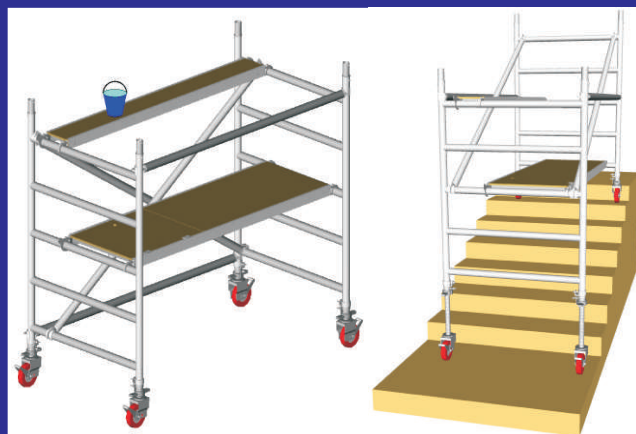


JOLLY

Lightweight Aluminium Alloy Access Tower to 10.62m Platform Height



Jolly is a quality aluminium access modular tower system specifically designed for demanding heavy duty trade applications. It is constructed using spans measuring 1,80 m in height, achieving a maximum total working height of 12,70 m (10.62m Platform Height). It is suitable for all types of maintenance and construction work, and is particularly suited to decorating & other trades where a sturdy but lightweight modular system is required with the ability to be used internally and externally with fast erection & installation. Jolly is made of lightweight aluminium tubular alloy (\varnothing 50 mm) with non skid knurled rungs. It can be assembled quickly & efficiently with a minimum of components. And it is easy to understand and use in all environments with minimal preparation and fast disassembly times allowing busy tradesmen to have the minimum of down time .



Module A of the Jolly tower system is 1.81 m high and allows a maximum working height of 3.00 m. It can be transported erected through standard door widths and also can be used on stairwells. Overall dimensions are 2.00 m x 1.05 m

ISO9000UNIEN287/1
ENISO9606/2

EUROPEAN
STANDARD
HD 1004



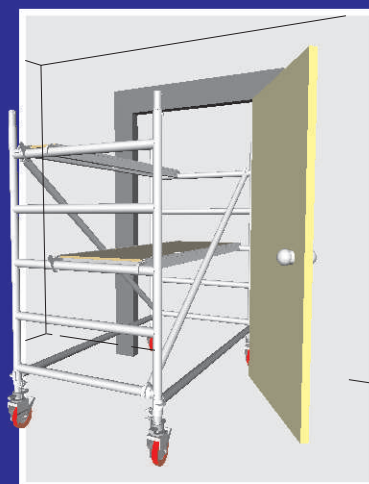
**GUARANTEE
5
YEARS**

Guaranteed by Svelt for 5 YEARS this quality modular access system fully conforms to:

HD1004 European Standard Class 3 (200 Kg/m² capacity)
the highest possible accreditation.

All tests were undertaken by:

Engineering Department of Milan University. European Standard HD1004



m 1,81**m 4,47****m 6,27****Jolly 1.81m (Module A):**

Using only 8 components (56.7 Kg), assembled in minutes the module A is ready for use at 1.81 m height (Platform Height 0.72m), and is suitable for internal use allowing a working height of 2.72 m.

**Jolly 4.47 m (Modules A+B+C):**

Adding the guardrail section B which includes 2 frames and 2 guardrails, and the extension C which includes 4 stabilisers (compulsory over this height) Jolly can be assembled to a total height of 4.47m (Platform Height 3.42m). (A+B+C = only 24 components – 108 Kg).

**Jolly 6.27m (Modules A+B+C+D):**

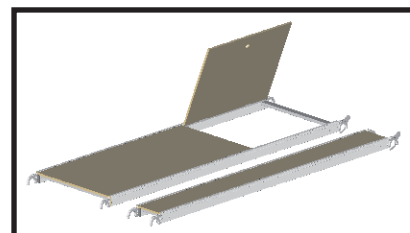
The extension D include an additional complete platform and 2 guardrails for a working height of 7.22m (Platform Height 5.22m). (A+B+C+D = only 36 components – 155 Kg).



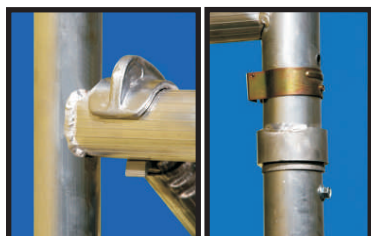
Starting from the height of 4.47 m (Platform Height 3.42m) onwards, it is possible to mount Modules D (with platforms and guardrails) and E in order to reach a maximum height of 11,67 m (Platform Height 10.62m). The tower's frames can safely be used as ladders for climbing (rung distance 30 cm) minimising components required for storage.

**Stabilisers:**

4 strong and sturdy, but lightweight, stabilisers (Ø 45 mm) are compulsory when the tower system is used over 2.70 meters height. These are mounted on the towers through easy assembly clamps with washer. A non-slip PVC foot ensures a safe and secure contact with the ground.



Working platform (1,86 m x 0,80 m): Being both very light and resistant, it consists of a carrying structure made of aluminium and a working platform made of timber. Each working platform is provided with a trapdoor for easy access within the tower by the user directly from the inner part of the tower. There are also 4 sturdy timber toe-boards to complete the working platform and prevent any risk of objects falling from all four sides of the tower. The Working platform is provided with a windlock clip which fixes the platform to the whole structure. This component has been rigorously tested and fully conforms to HD1004 (class 3 - 200 kilos/square meter). Weights: Working platform 16.5 Kg & kit of 4 stabilisers 6.0Kg.

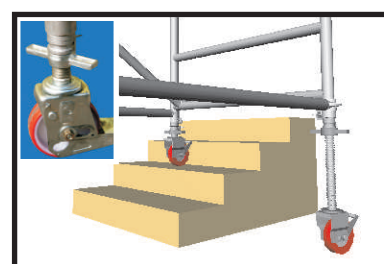
**Rungs and Clips**

Rungs are fixed to the frame tubes through quality certified welding thus making the tower more stronger than non welded systems. The rung Ø 50 mm is non skid and knurled on the whole surface area allowing for a safe contact of both hand & foot. Steel clips fix each frames to the other.



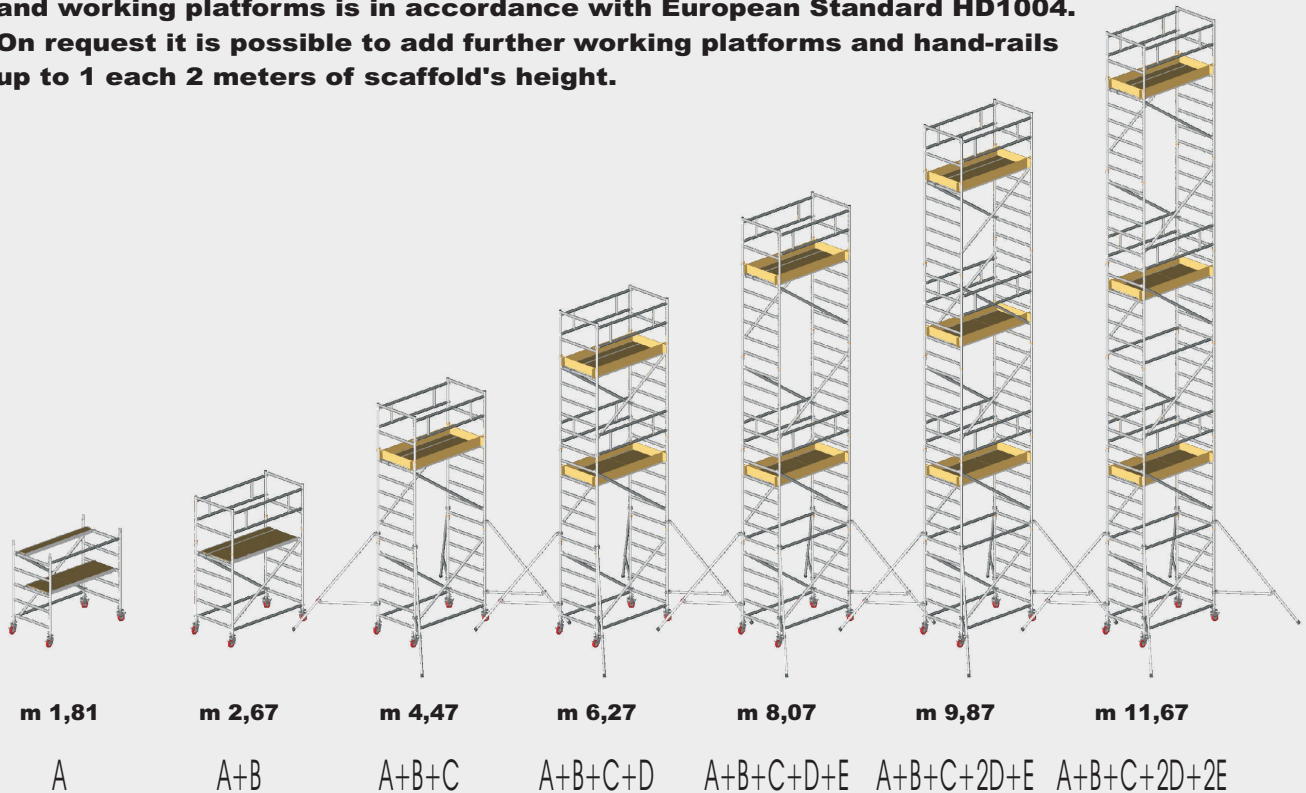
Self - locking hook in aluminium castings click easily into position on the tubular frame. Segmental latches give more than 225° contact area ensuring maximum tower stability. The hooking edge is reinforced to make it shock-proof. Brace model and length are printed on the casting to easily identify this detail.

Swivel and braked castors Pivoting wheels with Ø 150mm polypropylene no-mark castors with foot operating brakes. Assembled with 30 cm adjustable legs. The assembly gives maximum safety and ensures smooth & easy movement on even the most difficult rough terrain. These quality castors conform to European Standard HD1004. The weight of each is 5.5 kilos.



Advantages of JOLLY over competitor systems:
Component parts number: DECREASED
Total Tower Weight: DECREASED
Total Tower System Cost: DECREASED
Productivity & Saving: INCREASED!

In the drawing shown below, the minimal number of compulsory hand-rails and working platforms is in accordance with European Standard HD1004. On request it is possible to add further working platforms and hand-rails up to 1 each 2 meters of scaffold's height.



FOLDING BASE JOLLY

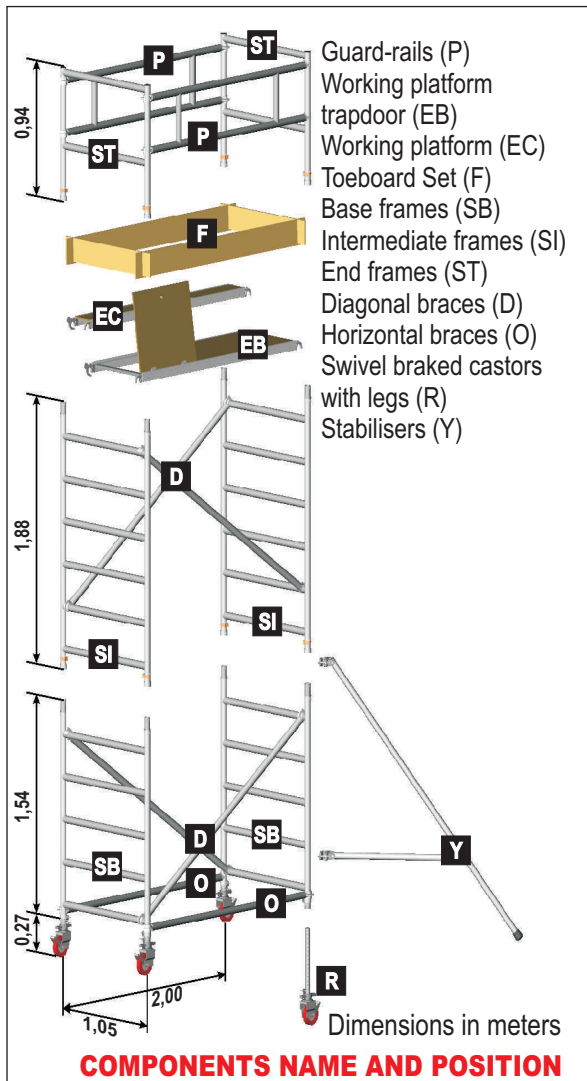
Jolly module A can be purchased with a pre-assembled fast opening & closing folding base. This base is a practical device for immediate works up to 1.81 m high (working height: 3.00 m). Two durable hinges enable rapid opening and closing of the base. When supplied, the folding base is also equipped with standard components that must be assembled when the base is used together with other Jolly modules to reach upper heights. **IMPORTANT WARNING:** the folding base can't be used on stairs

Folding base dimension details:



The folding base (1.81 m), when closed, passes through standard doors (dimensions folded: 1.05 x 0.3 m).

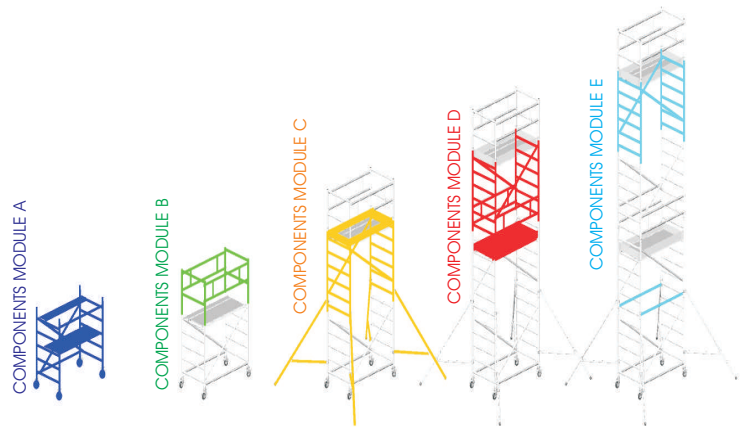
MODULE COMPONENTS



TECHNICAL FEATURES:

Overall dimensions module A: 2.00 x 1.05 m.
Complete working platform: 1.83 x 0.80m (16.5 Kg).
Capacity: Kg 200/m².
Non skid rung distance: 30cm.
Braked wheels: ø 150mm
Adjustable legs 30cm
Manufacturer's Guarantee: 5 years

Module A: 2 base frames (5 rungs each), 2 diagonal braces, 2 horizontal braces, 4 swivel and braked castors ø 150 with 30 cm adjustable legs, 1 working platform with trapdoor (2 pieces.).
Module B: 2 end frames (2 rungs each), 2 guard-rails.
Module C: 2 intermediate frames (6 rungs each), 2 diagonal braces, 1 toe-board set, 4 stabilisers.
Module D: 2 intermediate frames (6 rungs), 2 diagonal braces, 2 guard-rails, 1 working platform with trapdoor, 1 toe-board set.
Module E: 2 intermediate frames (6 rungs each), 2 diagonal braces, 2 horizontal braces.



PACKAGING

Jolly has been designed to allow trade distributors easy & convenient storage. Each module is separately packaged as a single item, showing clearly the content and the detailed position of it in the overall tower system. The distributor can immediately identify and deliver the module corresponding to the requested height without difficulty, allowing easy counting and checking of all required components. The quality of Jolly is evident by visual inspection & compares favourably to the UK market leading tower system to 10 m + platform heights.

Jolly	Height m	Weight Kilo
Module A	1,73	56,70
Module B	0,94	12,40
Module C	1,80	39,00
Module D	1,80	46,90
Module E	1,80	20,20
OPTIONALS		
Module A with folding base Extra price	-	22,50
Additional working platforms with toe-boards	-	22,50
1 safety set (2 guard-rails)	-	7,40
Swivel and braked castors Ø 150 mm c/w 30 cm leg adjustment (each)	-	5,50
Additional Stabilisers (each)	-	4,00
Additional diagonal braces (each)	-	2,00
Additional price for painted wood (platforms & toeboards)		

Jolly			Modules	Stabilisers	Platforms	components	Weight Kg
Platform h. m	Total h. m	Working h. m			n°	n.	
0,72	1,81	2,72	A	no	1	12	56,70
1,62	2,67	3,62	A+B	no	1	16	69,10
3,42	4,47	5,42	A+B+C	si	1	28	108,10
5,22	6,27	7,22	A+B+C+D	si	2	40	155,00
7,02	8,07	9,02	A+B+C+D+E	si	2	44	175,20
8,82	9,87	10,82	A+B+C+2D+E	si	3	56	222,10
10,62	11,67	12,62	A+B+C+2D+2E	si	3	60	242,30

NB. All Technical features are indicative and can be modified without prior notice.



Via delle Groane, 13 - 24060 Bagnatica BG ITALY - Tel. +39035681663
Fax +39035676321 - Web: <http://www.svelt.it> - E-mail: export@svelt.it