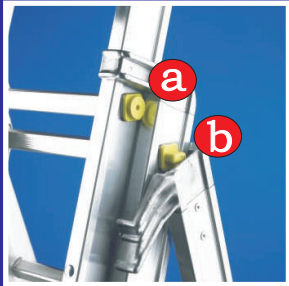


Superior Quality Aluminium Combination ladders

The De Luxe range of Heavy Duty ladders are made of high quality ribbed extruded aluminium, manufactured with an advanced automatic flanging method (rungs are fixed to the ladder profiles with a "sandwich" system) giving great strength & longevity of performance. As Svelt's premium quality combination ladder the De Luxe offers high level performance at a competitive price unequalled for such quality, with a 5 years manufacturer's guarantee. The range uses heavy duty sturdy aluminium profiles (67/84/100 mm) giving exceptional strength & rigidity at all times. **All models can be used on stairwells and can also be used on uneven ground or levels, by virtue of the patented adjustable stabiliser system and feature case straps as standard.**

Standard features



Hinges

Made of high quality aluminium featuring a mechanism which allows easy opening (b) thus ensuring stability & comfort in all applications. The superior opening mechanism is unbreakable and has passed the toughest resistance test with 260 kg imposed by the European Standard. The high security anti-movement cover (a) prevents the ladder moving beyond the maximum safe usage height.



Flanged, ribbed & ergonomic rungs

Three-phase flanging (rungs are fixed with a "sandwich" system) for a long lasting: 1 & 2. Frame inner side swelling, frame outer side flanging and 3 swelling inside the frame. All rungs feature a sturdy 30mm section and are set at an angle to ensure greater comfort in the normal usage position (70 degrees) as they are inclined at a 90 degree angle to the ladder stile, and therefore parallel to the surface. Safety and comfort of use are therefore ensured by a flat stable rung for the user ensuring greater comfort & productivity. There is no cutting into the foot as found with traditional square rungs which form a diamond shape in use causing discomfort to the user. The rung bearings loadings are fully compliant with European Standards at 260 Kg. The rung spacing is 300mm.



Sliding Wheels

Made of knurled rubber they secure the ladder in use preventing upward movement of the ladder in use when positioned against a wall thus preventing sliding.

Packaging and papers

Each ladder is packaged in thermo-shrinkable plastic and includes identification label and a test certificate in compliance with European Standard. Instructions and maintenance instructions are provided as standard.



Device to stop uncontrolled upward shifting

This prevents uncontrolled ladder closure and movement both during use and transportation



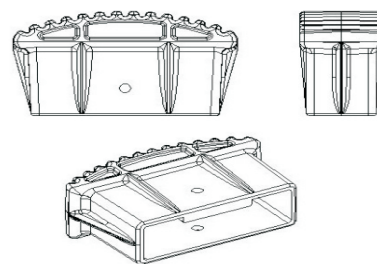
Casing Straps as STANDARD thus preventing uncontrolled ladder opening/closing

These are vital when a ladder is used as a stepladder as they stop uncontrolled opening and closing.



LUXE1

Rubber Feets



Anti-skid Rubber Feet






Luxe 1 section is light and resistant and is provided on all 4 ends with ergonomic rubber increased feet, hose are fixed through a rivet and this new method helps avoiding their loss and allows the ladder can be used even upside down

Special Rubber Feets

Special feet design allows a safe point of support to the wall and to the ground surface and reduces the possibility of the ladder slipping.

TECHNICAL FEATURES LUXE1

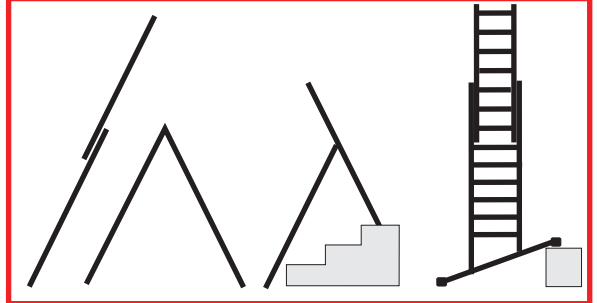
 N.					
	m	m	m	mm	Kg
7	2,30	-	-	67x27	4,3
9	2,90	-	-	67x27	5,4
11	3,50	-	-	67x27	6,5
13	4,10	-	-	67x27	7,5
15	4,70	-	-	67x27	8,5
17	5,30	-	-	67x27	9,6

Section width cm 42,3





Position of use



Patented adjustable stabiliser



LUXE2 two section push-up and stepladders is also suitable for on stairwells. Equipped with base stabiliser and sliding wheels for "lean to wall" position. When used as a stepladder the third section serves only as a guardrail.

Patented adjustable base stabiliser standard on Luxe 2 and Luxe 3

Constructed of strong but lightweight aluminium, this is a new adjustable system which allows adjustment on uneven ground by counter-balancing the effects of uneven surfaces ensuring easy safe operation and usage of the ladder. This is facilitated by the use of 2 strong extractable pins which allow the user to level the ladder at 5 mm intervals between 180 to 310mm from the base. When the ladder is extended in a confined or narrow operating area, the ladder can be used without use of the stabiliser. "Extended" feet lift the base stabiliser to 45 mm and in this way ladder can be used even where stones or small obstacle obstructions are present.

TECHNICAL FEATURES LUXE2

N.	m		mm		Kg
	Diagram 1	Diagram 2	Diagram 3	Diagram 4	
6 + 7	2,25	2,10	3,45	67x27	12,0
8 + 9	2,85	2,70	4,65	67x27	14,0
10 + 11	3,45	3,30	5,85	67x27	16,5
12 + 13	4,05	3,80	6,75	67x27	19,0
13 + 14	4,35	4,10	7,65	84x27	23,0
15 + 16	4,95	4,70	8,85	100x27	28,5

Base Section width cm 48
Last Section width cm 42,3

**5 YEARS
WARANTEE**

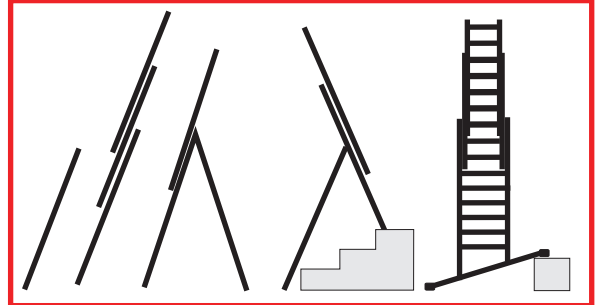
**CAPACITY
150 KG**





LUXE3

Position of use



Device to prevent third section overturning



LUXE3 three section push-up and stepladders is also suitable for on stairwells. Equipped with base stabiliser and sliding wheels for "lean to wall" position. When used as a stepladder the third section serves only as a guardrail.

Device to prevent third section overturning (LUXE3)

This prevents uncontrolled slipping of the ladder from the operator's hand, and falling of the third section during extension of the ladder when used as a stepladder.

TECHNICAL FEATURES LUXE3

N.	Diagram				Kg
	m	m	m	mm	
6 + 7 + 7	2,25	2,10	4,95	67x27	16,5
7 + 8 + 8	2,55	2,40	5,85	67x27	18,5
8 + 9 + 9	2,85	2,70	6,45	67x27	20,0
9 + 10+10	3,10	3,00	7,30	84x27	25,0
10+11+11	3,40	3,30	8,50	100x27	30,0
12+13+13	4,00	3,90	10,00	100x27	34,5

Base Section width cm 48
 Intermediate Section width cm 42,3
 Last Section width cm 36,5

**5 YEARS
 WARANTEE**

**CAPACITY
 150 KG**

