

1500 EX



www.ommelift.com

Trailer lift - Articulated

Dealer:



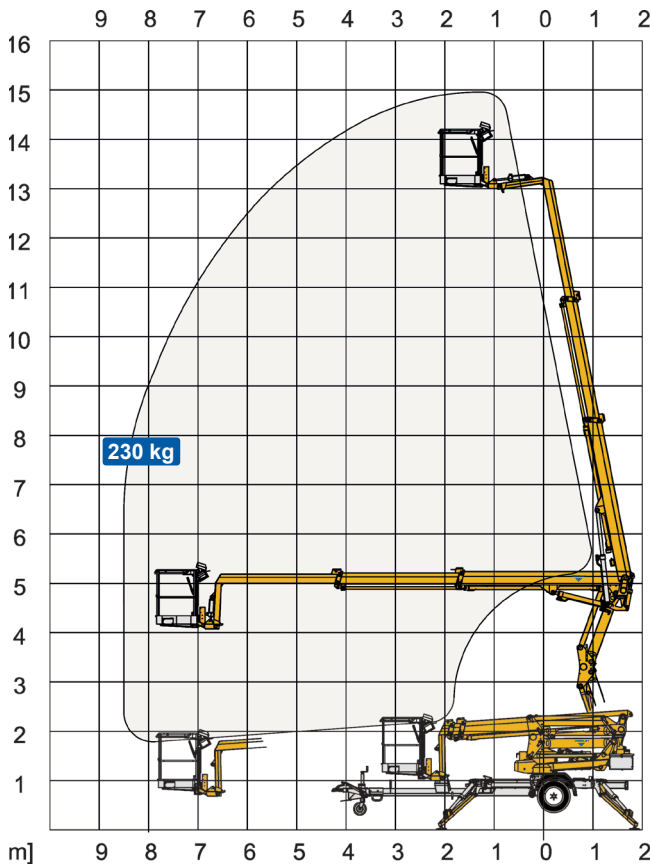
Transporel, LDA.

Rua Central Olival, nº 450, Edifício 2
Olival Porto, 4415-729, Portugal
+351 226 153 360
transporel@transporel.pt
www.transporel.pt

OMMELIFT



1500 EX Trailer lift



Technical Data:	1500 EX	1500 EXB	1500 EXB-Li
Max. working height	15.0 m		
Max. platform height	13.0 m		
Max. outreach	8.5 m		
Up and over clearance	5.0 m		
Angle boom length (boom + basket)	2.0 m		
Jib length (jib + basket)	-		
Vertical jib rotation	-		
Turret rotation	± 400°		
Basket rotation	± 50°		
Max. basket load	230 kg		
Basket size	1.25 x 0.8 x 1.1 m		
Stabilizer pad size	ø200 mm		
	⁵ Petrol ⁶ Diesel	230V / 16A	BATTERY Lithium
Engine	⁵ Option ⁶		
Fuel tank capacity			
Generator			
Battery pack		24V/139Ah/5h	24V/120Ah
Charger		24 V / 30 A	24 V / 25 A
Double charger system		Optional	Optional
Elec. descent		Optional	
See www.ommelift.com for more features and options			
Self-propulsion with hydraulic engagement of traction rollers	Standard		
Gradeability	14% / 8°		
Ground to tire clearance at max. set-up	Min. 300 mm (13.8% / 7.9°)		
Total weight	2000 kg	2050 kg	2000 kg
Ground pressure, outrigger pad	12.9 kg/cm ²	12.4 kg/cm ²	12.9 kg/cm ²
Ground pressure with 0.4 x 0.4 m spreader plate	0.7 kg/cm ²	0.7 kg/cm ²	0.7 kg/cm ²
Max. force, outrigger	10.5 kN	10.5 kN	10.5 kN
Hydraulic stabilizers	Standard		
Controls	2-step		
Flush basket mount	Standard		
Elec. power outlet in basket	Standard		
Tool trays in basket	Standard		

