

2500 E



www.ommelift.com

Trailer lift - Telescopic

Dealer:

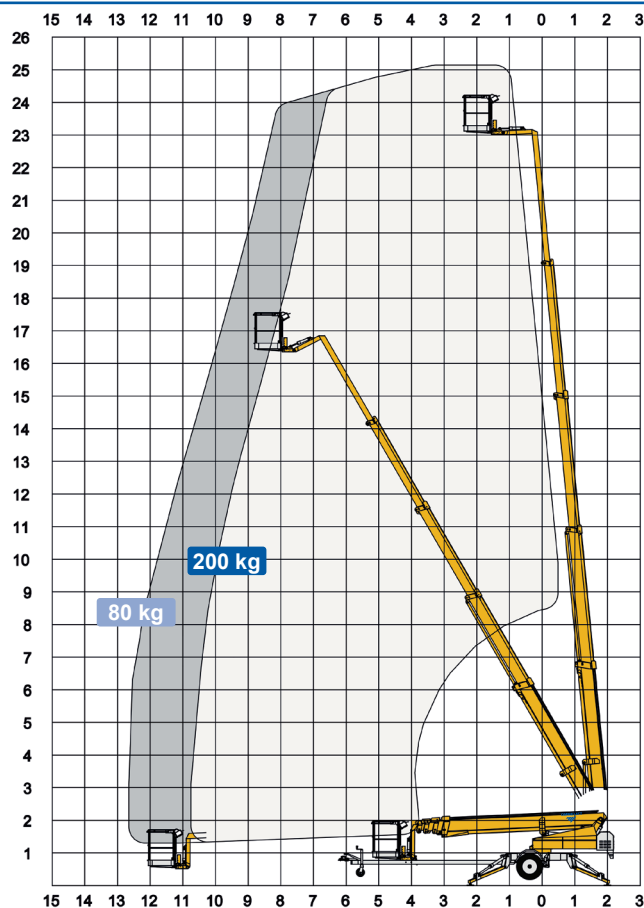


Transporel, LDA.

Rua Central Olival, nº 450, Edifício 2
Olival Porto, 4415-729, Portugal
+351 226 153 360
transporel@transporel.pt
www.transporel.pt



2500 E Trailer lift



Technical Data:	2500 E	2500 EB	2500 EBD
Max. working height	25.1 m		
Max. platform height	23.1 m		
Max. outreach	12.6 m		
Up and over clearance	-		
Angle boom length (boom + basket)	2.0 m		
Jib length (jib + basket)	-		
Vertical jib rotation	-		
Turret rotation	± 400°		
Basket rotation	± 41°		
Max. basket load	200 kg		
Basket size	1.25 x 0.8 x 1.1 m		
Stabilizer pad size	ø200 mm		
	⁵ Petrol ⁶ Diesel	230V / 16A	BATTERY HYBRID
Engine	⁵ Optional ⁶	⁵ Optional ⁶	⁶ 14kW/18.8hp
Fuel tank capacity			16 l
Generator			24 V / 22 A
Battery pack		24V/200Ah/5h	24V/200Ah/5h
Charger		24 V / 30 A	24 V / 30 A
Double charger system		Optional	Optional
Elec. descent	Optional	Optional	Optional
See www.ommelift.com for more features and options			
Self-propulsion with hydraulic engagement of traction rollers	Standard		
Gradeability	14% / 8°		
Ground to tire clearance at max. set-up	Min. 170 mm (9.1% / 5.2°)		
Engine only version available			
Total weight	3000 kg	3060 kg	3180 kg
Ground pressure, outrigger pad	20.0 kg/cm ²	20.0 kg/cm ²	20.0 kg/cm ²
Ground pressure with 0.4 x 0.4 m spreader plate	1.1 kg/cm ²	1.1 kg/cm ²	1.1 kg/cm ²
Max. force, outrigger	17.1 kN	17.1 kN	17.1 kN
Hydraulic stabilizers	Standard		
Controls	Proportional		
Flush basket mount	Standard		
Elec. power outlet in basket	Standard		
Tool trays in basket	Standard		

